

# WT 1L 175 Spark Arrestor

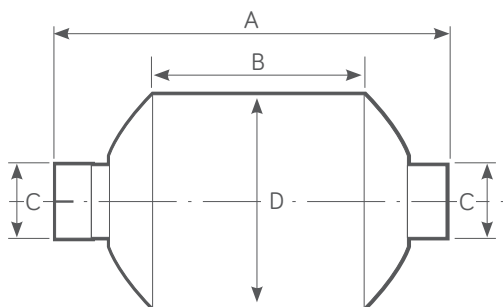
Single Centrifuge Type



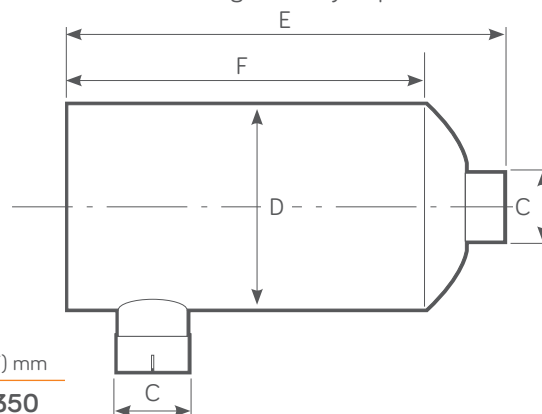
Power Range HP - (Kw)	Exhaust Gas Flow Rate 500°C (calculated)	Weight
30 - 70 (23 - 52)	385 CFM @ 15" H <sub>2</sub> O	4 Kg

## WT 1L 175 PRODUCT DIMENSIONS

Standard configuration



Optional side inlet/outlet configuration by request



(A) mm	(B) mm	(C) mm (Inches)	(D) mm	(E) mm	(F) mm
384	200	50.8 - 63.5 (2 - 2.5)	177.4	465	350

## FEATURES

- Designed for temporary use or as an end of line addition to existing exhaust layout.
- Used in conjunction with existing silencer.
- Improved internal gas flow dynamics.
- 100% Stainless Steel Construction - ATEX & UKEX Approved
- Stainless Steel - Self colour or polished (optional)
- Optional Mild Steel - Non ATEX, Non UKEX
- Mild Steel - Heat Resistant Black Paint.

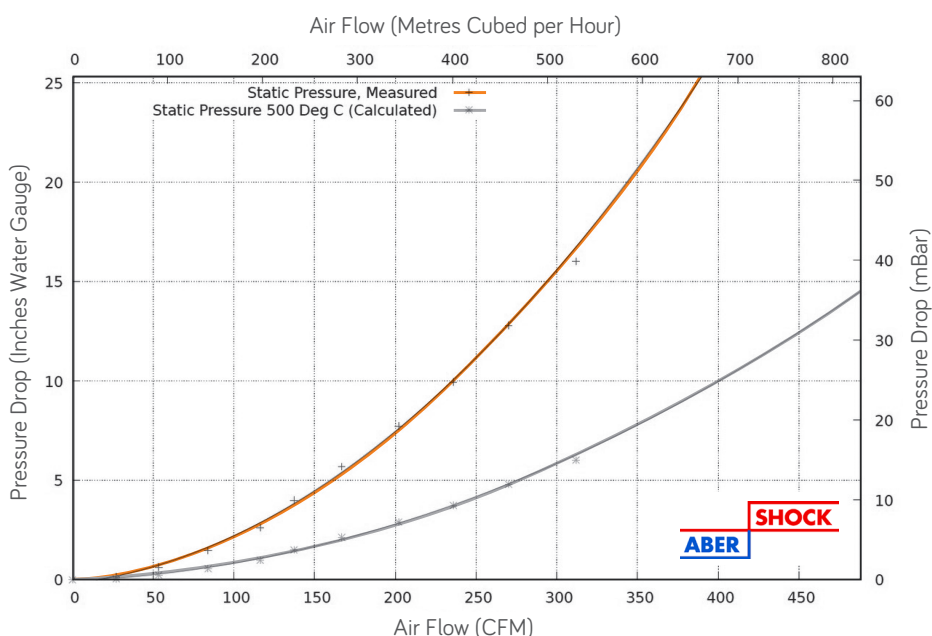
## TESTED AND APPROVED

- To ATEX EN1834 (parts 1, 2 & 3)
- ATEX Approved Body No. 2776
- UKEX Approved Body No. 2503



ISO9001-2015

## WT 1L 175 FLOW PERFORMANCE



wyndham|page