

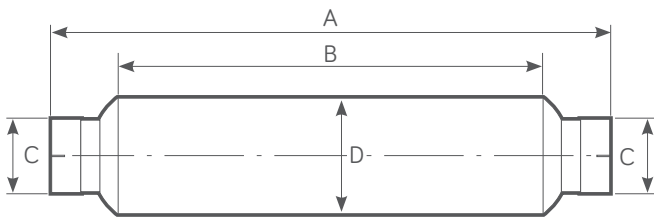
WT 2L 235 Spark Arrestor

Centrifugal Range

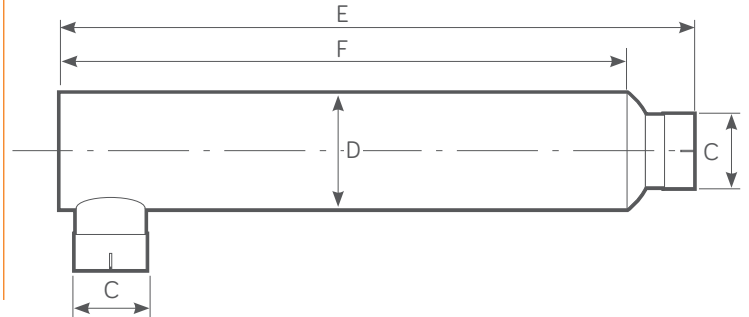
Power Range HP - (Kw)	Exhaust Gas Flow Rate 500°C (calculated)	Weight
250 - 450 (186 - 336)	2100 CFM @ 15" H₂O	15 Kg

WT 2L 235 PRODUCT DIMENSIONS

Standard configuration



Optional side inlet/outlet configuration by request

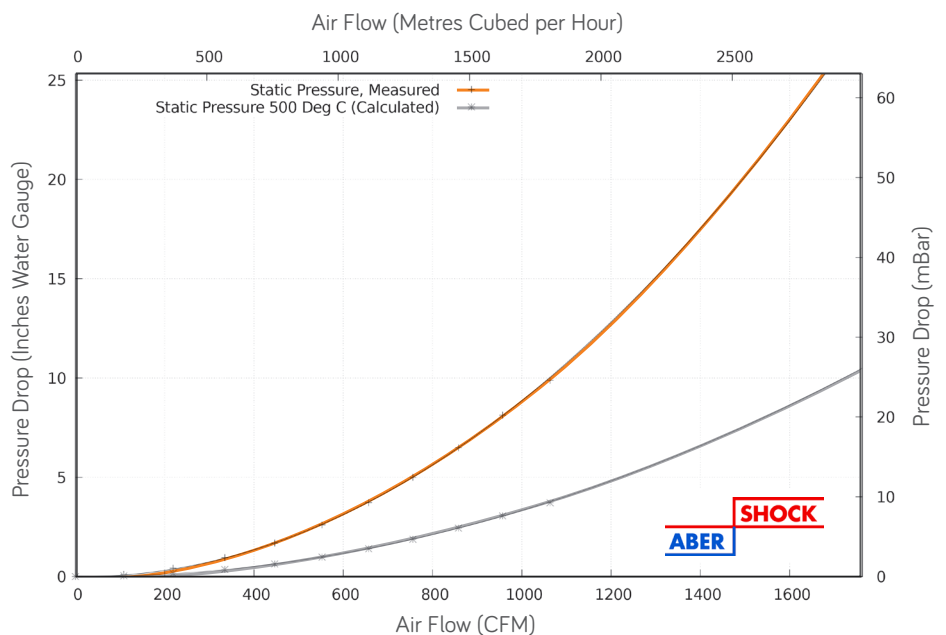


(A) mm	(B) mm	(C) mm (Inches)	(D) mm	(E) mm	(F) mm
1335	1110	114.3 - 152.4 (4.5 - 6)	235.5	1465	1345

FEATURES

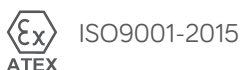
- Twin Centrifuge Type.
- Good Silencing.
- Intended for permanent installation.
- Used with or as replacement for muffler.
- Improved internal gas flow dynamics.
- 100% Stainless Steel Construction - ATEX & UKEX Approved
- Stainless Steel - Self colour or polished (optional)
- Optional Mild Steel - Non ATEX, Non UKEX
- Mild Steel - Heat Resistant Black Paint.

WT 2L 235 FLOW PERFORMANCE



TESTED AND APPROVED

- To ATEX EN1834 (parts 1, 2 & 3)
- ATEX Approved Body No. 2776
- UKEX Approved Body No. 2503



wyndham|page